

MODEL NO: SELGM10032B

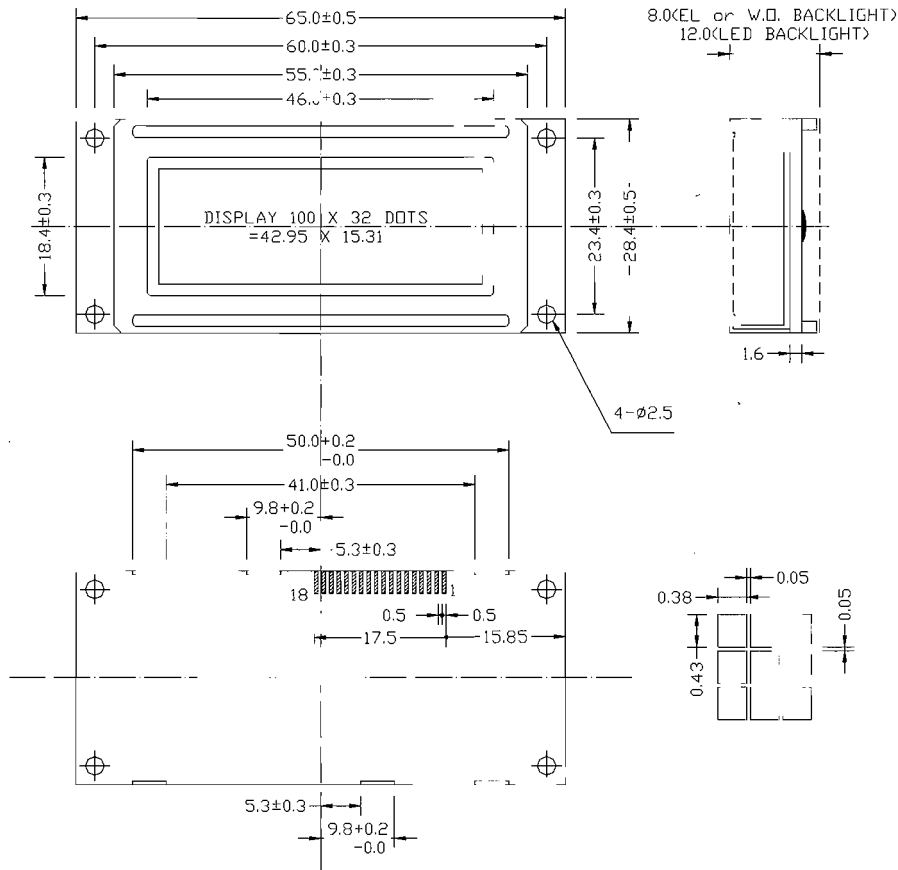
■ FEATURES

- Display Format: 100 X 32 Dots
- Input Data: 8 Bits Interface Available
- Backlight: Without/LED/EL
- Power Supply: Single Power Supply <5.0V ± 5%>
- Driving Scheme: 1/32 Duty , 1/6 Bias

■ MECHANICAL DETAIL

Module Size L X W X H (mm)	Viewing Area L X W (mm)	Dot Size L X W (mm)	Dot Pitch L X W (mm)
65.0 X 28.4 X 8.0/12.0	46.0 X 18.4	0.38 X 0.43	0.43 X 0.48

■ ASSEMBLY DIAGRAM



1	2	3	4	5	6	7	8	9	10	11	12	13	14	15	16	17	18
VSS	VDD	VO	AD	R/W	E1	E2	NC	DB0	DB1	DB2	DB3	DB4	DB5	DB6	DB7	LED+	LED-